



The Crossing

VOLUME 4, ISSUE 1

FALL 2010

New Rules for OL Presenters

Contact Us:

INOL
31 E. Georgia St.
Indianapolis, IN 46204

P: 317.267.4011
F: 317.267.4357
W: www.inol.org



No Supplies for Birthday Parties:

INOL has been receiving many requests for OL supplies to be sent to kids birthday parties, Halloween parties, and other children's functions. INOL does not send supplies to these types of events unless a presenter will be conducting a presentation. If anyone asks about supplies for parties, please direct them to the Elite Promotions website where they can order their own OR let them know that INOL does not send supplies for these types of events.

Operation Lifesaver, Inc. has implemented two new rules for presenters and programs. The rules have been reviewed by OLI's attorney, Sandy Pfau Englund, and should be implemented in every state.

The Two-Adult Rule is in compliance with state laws regarding unsupervised access to students, minors and at-risk populations. OLI requires that TWO adults always be present whenever an OLI volunteer makes a presentation to, or otherwise is working with, minors under the age of eighteen years old, the elderly, disabled or other at-risk populations. For example, when making presen-

tations in schools and classrooms to students, the classroom teacher or other appropriate school personnel must remain in the classroom at all times with the OL presenter.



New Presenter Class in Indianapolis on Oct. 20, 2010

The next new rule is the Attorney Rule. Attorneys or employees of private law firms are NOT eligible to attend OLI Pre-

sender Training classes or to serve as OLI Presenters or Trainers. In addition, the facts and circumstances of a situation may exclude other persons from participating in OLI and state OL programs in order to maintain OLI's strict policy not to intervene in any way with collision-related lawsuits. This rule is mainly geared at keeping private law firms from trying to attend OL Presenter classes.

If you have any questions about these new rules, feel free to contact Jessica Feder at 317.267.4011 or jfeder@inol.org. You may also contact the Operation Lifesaver National office at 1.800.537.6224.

Presentation Areas to Focus On for 2011

As we are approaching the end of 2010 there are a few items I would like presenters to keep in mind for 2011. Indiana Operation Lifesaver's statistics are showing very low numbers in presentations for Bus Drivers and Professional Truck Drivers as well as High School Drivers Ed.

Our stats are showing good numbers with K-8 students, Misc. General Adult, and General High School.

INOL would like to challenge all of the Indiana OL presenters to increase their presentations for Bus Drivers, Professional Truck Drivers,

and High School Drivers Ed for 2011. If you are only comfortable presenting to certain groups, that is perfectly acceptable. INOL would like to see those who are comfortable with these groups to add additional presentations in the 2011 year. You can make a difference!

If you have not completed 4 presentations this year, please do so by 12/31/10

OLI's New & Improved Website



Presenters Eric & Chris Graf at a recent safety fair

"The door to safety swings on the hinges of common sense."

-Charles M. Hayes

On November 4, 2010 Operation Lifesaver, Inc. unveiled its redesigned website (www.oli.org) to reach new audiences and further its mission of preventing tragic deaths and injuries around train tracks. The dynamic site design uses videos, photographs and stories of real families to ensure that visitors come away with a safety message.

"We want to attract audiences of all ages with com-

elling videos and real stories of people who have been affected by train-related incidents," noted Operation Lifesaver President Helen Sramek. "Our goal is to communicate the critical importance of safe behavior around tracks. Getting these messages across really is a matter of life and death."

New features on the website include:

- Rotating scenarios on the home page illustrating the statistic that about every three hours

in the U.S., a vehicle or person is hit by a train.

- A new "impact" section with real stories from people whose lives have forever been changed by vehicle- or pedestrian-train incidents.
- A new "videos" section that allows visitors to view and share Operation Lifesaver's newest public service announcements and excerpts from safety and training videos.
- Simplified navigation through six main categories, and "quick links" to popular pages from the home page.

Hunting Season: Stay Safe!

With hunting season in full swing in many states, Indiana Operation Lifesaver would like to remind outdoor enthusiasts that hunting on or near train tracks is not only illegal trespassing, it could be deadly. Last year, 428 people died and 338 were injured while trespassing on railroad property nationwide, according to federal statistics. Be-

cause any time is train time, hunting on or near tracks is like playing Russian roulette.

Walking, hunting, fishing or riding snowmobiles or ATVs on tracks is trespassing; it's dangerous and illegal. Trespassers are subject to arrest and/or fines. Stay three or four feet away from railroad tracks - loco-

motives and rail cars are wider than the tracks.

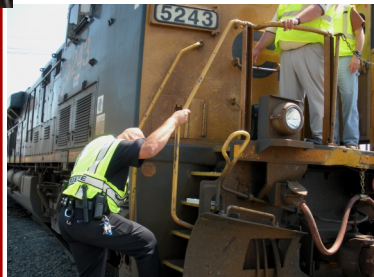
If you see someone walking on railroad tracks or property, please remind them that it is deadly as well illegal. They can face hefty fines or even jail time.

You can check out the OLI Hunting PSA on INOL's Facebook page or on YouTube.



INOL Presenter Christine Graf at the Lake Hills FD Open House

INOL's Annual meeting will take place in February of 2011 in Indianapolis. Details will be coming soon!



IMPD Police Officer getting on CSX Enforcement train

CSX Enforcement Locomotive



Symposium groups working on poster contest in Social Media workshop

Congrats to Korey Henderson for becoming a GCCI Instructor!